

5/2-directional valve, Series CD04

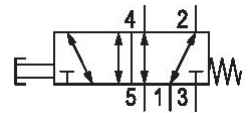
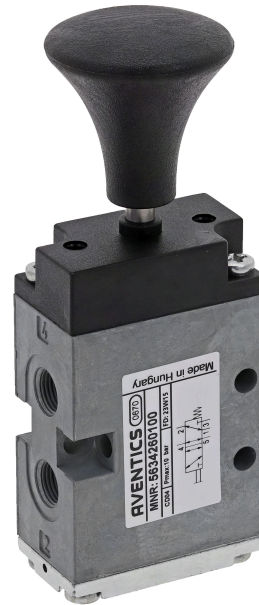
5634260100

Series
CD04

2024-05-28

Series CD04

Qn = 900l/min



Technical data

Industry

Activation

Valve type

Actuating control

Plate connection

Actuating element

Sealing principle

Lock type

Industrial

Mechanical

Spool valve, positive overlapping

Single Solenoid

Pipe connection

Button

Soft seal

not lockable

Compressed air connection type

Compressed air connection input

Compressed air connection output

Compressed air connection, exhaust

Nominal flow Qn

Min. working pressure

Max. working pressure

Min. actuating force

Min. ambient temperature

Max. ambient temperature

Internal thread

G 1/8

G 1/8

G 1/8

900 l/min

-0.95 bar

10 bar

70 N

-20 °C

65 °C

5/2-directional valve, Series CD04

5634260100

Series
CD04

2024-05-28

Min. medium temperature	-20 °C
Max. medium temperature	65 °C
Medium	Compressed air
Min. oil content of compressed air	0 mg/m ³
Max. oil content of compressed air	1 mg/m ³
Max. particle size	50 µm

Weight	0.32 kg
--------	---------

Material

Housing material	Die cast zinc Polyamide fiber-glass reinforced
Seal material	Acrylonitrile butadiene rubber
Material actuating control	Polyoxymethylene
Part No.	5634260100

Technical information

The min. control pressure must be adhered to, since otherwise faulty switching and valve failure may result!

The pressure dew point must be at least 15 °C less than ambient and medium temperature and may not exceed 3 °C.

The oil content of compressed air must remain constant during the life cycle.

Use only the approved oils from AVENTICS. Further information can be found in the "Technical information" document (available in <https://www.emerson.com/en-us/support>).

5/2-directional valve, Series CD04

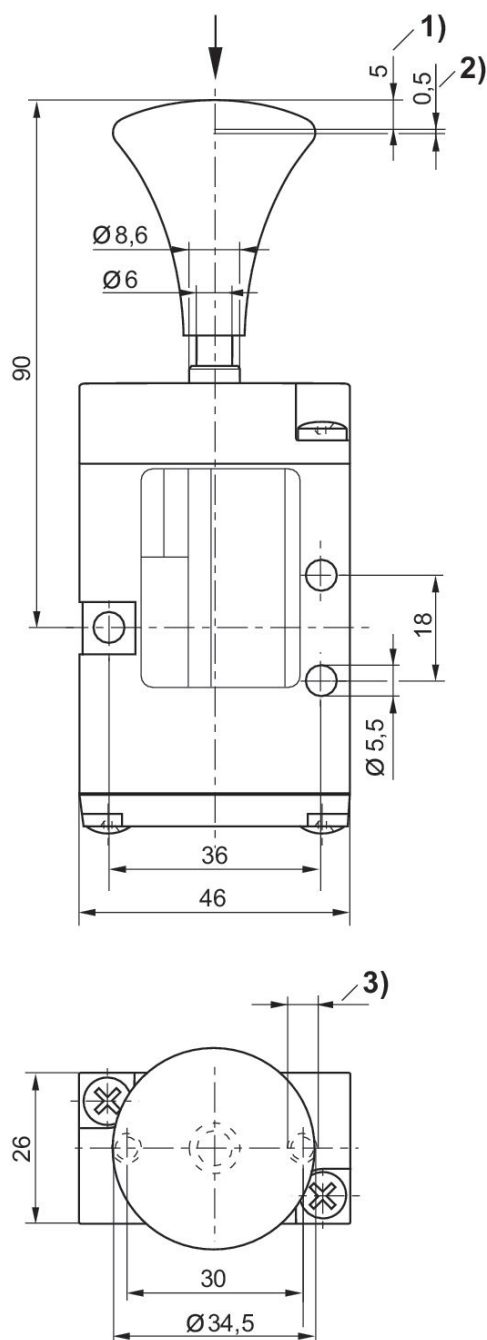
5634260100

Series
CD04

2024-05-28

Dimensions

Fig. 6



1) Stroke 2) Overstroke 3) $\varnothing 4.5 - 12$ mm deep