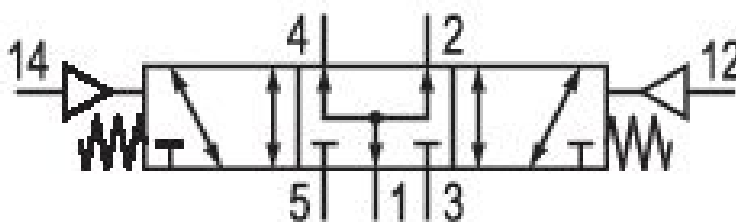
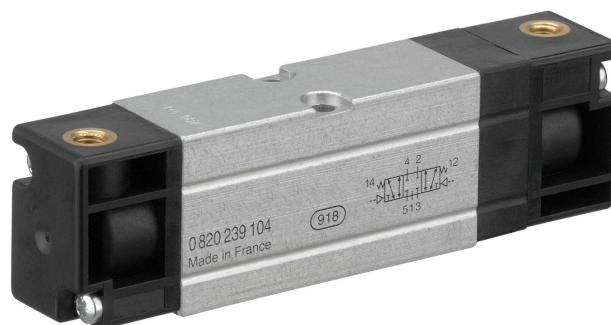


5/3-directional valve, Series CD02-AL

0820239106

ISO 15407-1, 18 mm, CD02-AL series

■ $[[Q_n =]][[250 \dots 450] \text{ l/min}]$



Technical data

Industry

Industrial

Activation

Pneumatically

Nominal flow Q_n

250 l/min

Compressed air connection output

VDMA 02 base plate

Connection type

Plate connection

Working pressure min.

-0.9 bar

Working pressure max

10 bar

Sealing principle

Soft Seal

Standards

ISO 15407-1

Valve type

Spool valve, positive overlapping

Version

18 mm

Pilot

External

Can be assembled into blocks

Can be assembled into blocks

Blocking principle

Base plate principle, multiple

Control pressure min. 2.2 bar	version pneumatic port Pressurized Center
Control pressure max. 10 bar	Compressed air connection VDMA 02 base plate
Min. ambient temperature 0 °C	Compressed air connection input VDMA 02 base plate
Max. ambient temperature 80 °C	Mounting screw M3
Min. medium temperature 0 °C	Weight 0.11 kg
Max. medium temperature 80 °C	Housing material Aluminum
Medium Compressed air	Surface housing anodized
Max. particle size 5 µm	Seal material Acrylonitrile butadiene rubber Hydrogenated nitrile butadiene rubber
Oil content of compressed air min. 0 mg/m ³	Material, front cover Polyamide
Oil content of compressed air max. 5 mg/m ³	Part No. 0820239106

Technical information

The min. control pressure must be adhered to, since otherwise faulty switching and valve failure may result!

The pressure dew point must be at least 15 °C under ambient and medium temperature and may not exceed 3 °C .

The oil content of compressed air must remain constant during the life cycle.

Use only the approved oils from AVENTICS. Further information can be found in the "Technical information" document (available in <https://www.emerson.com/en-us/support>).

Dimensions

