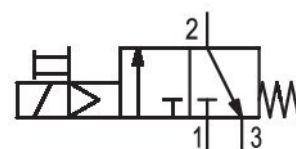


# 3/2-directional valve, electrically operated, Series AS2-SOV

## R412006271

### General series information Series AS2

- The AVENTICS Series AS2 is a modular, versatile maintenance unit for universal application. This Series offers compact dimensions, is highly efficient, lightweight and easy-to-use. The AVENTICS Series AS guarantees reliability, safety, and efficiency with a simplified assembly and maintenance efforts.



### Technical data

Industry  
Activation  
Nominal flow Q<sub>n</sub>  
Compressed air connection  
Working pressure min.  
Working pressure max  
Operational voltage AC at 50 Hz  
Operational voltage AC at 60 Hz  
Sealing principle  
Connection type  
Parts  
Can be assembled into blocks  
basic valve with electrical connector

Industrial  
Electrically  
2000 l/min  
G 3/8  
2.5 bar  
10 bar  
220 V  
230 V  
soft seal  
Pipe connection  
3/2-directional valve  
Can be assembled into blocks  
Basic valve with pilot valve

|                                      |                                     |
|--------------------------------------|-------------------------------------|
| Type                                 | Poppet valve                        |
| Min. ambient temperature             | -10 °C                              |
| Max. ambient temperature             | 50 °C                               |
| Medium                               | Compressed air<br>Neutral gases     |
| Max. particle size                   | 25 µm                               |
| Compressed air connection, exhaust   | G 1/4                               |
| Nominal flow Qn 1 to 2               | 2000 l/min                          |
| Nominal flow Qn 2 to 3               | 380 l/min                           |
| Operating voltage                    | 220-230 V AC                        |
| Holding power AC 50 Hz               | 1.6 VA                              |
| Holding power AC 60 Hz               | 1.4 VA                              |
| Switch-on power AC 50 Hz             | 2.2 VA                              |
| Switch-on power AC 60 Hz             | 1.6 VA                              |
| Connector standard                   | ISO 15217                           |
| Protection class with connection     | IP65                                |
| Reverse polarity protection          | Protected against polarity reversal |
| Electrical connection type 2         | Plug                                |
| Electrical connection 2, thread size | ISO 15217, form C                   |
| Weight                               | 0.219 kg                            |

## Material

|                           |                                 |
|---------------------------|---------------------------------|
| Housing material          | Polyamide                       |
| Seal material             | Acrylonitrile butadiene rubber  |
| Material threaded bushing | Die cast zinc                   |
| Material front plate      | Acrylonitrile butadiene styrene |
| Part No.                  | R412006271                      |

## Technical information

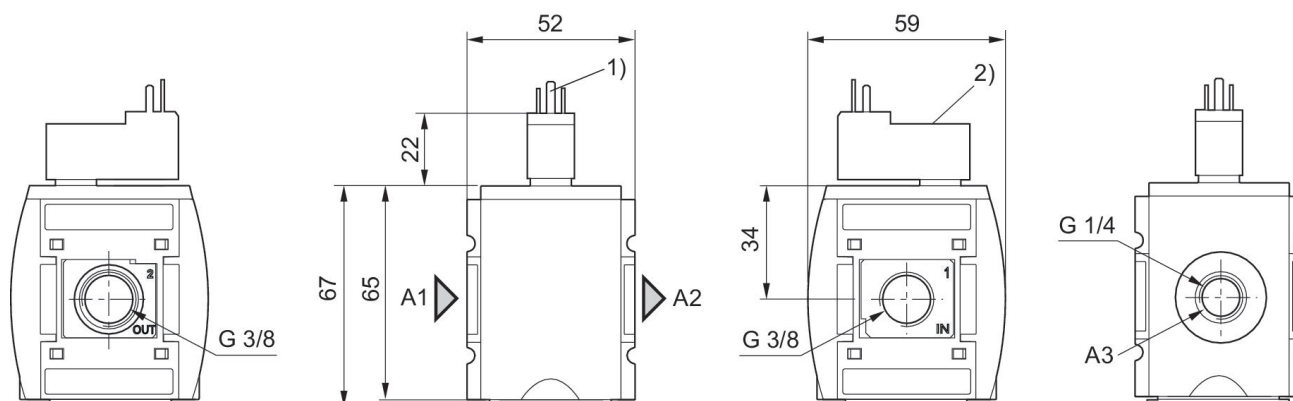
The pressure dew point must be at least 15 °C less than ambient and medium temperature and may not exceed 3 °C.

Nominal flow Qn with secondary pressure p2 = 6 bar at  $\Delta p = 1$  bar

A change in the flow direction (from air supply on the left to air supply on the right) occurs by rotating installation by 180° about the vertical axis. Please see the operating instructions for further details.

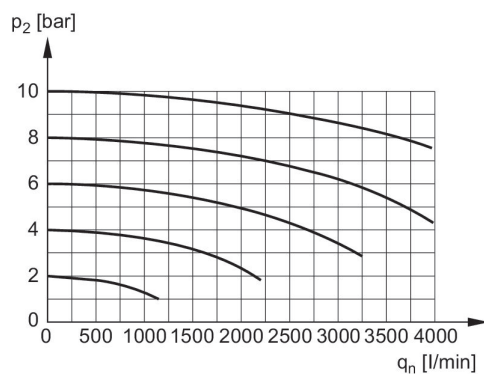
A short silencer is required for wall mounting (see accessories e.g. R412004817).

## Dimensions in mm



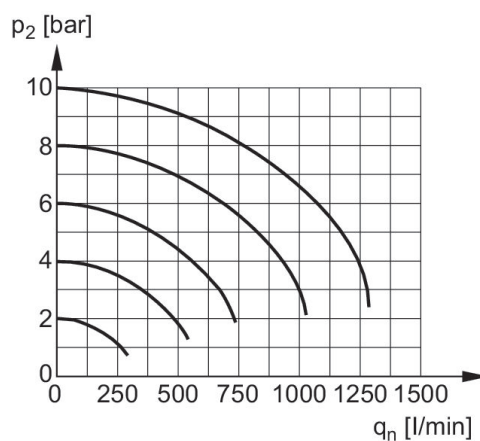
A1 = input  
A2 = output  
A3 = ventilation port  
1) For valve plug connectors according to ISO 15217 (form C)  
2) Manual override

## Flow rate characteristic



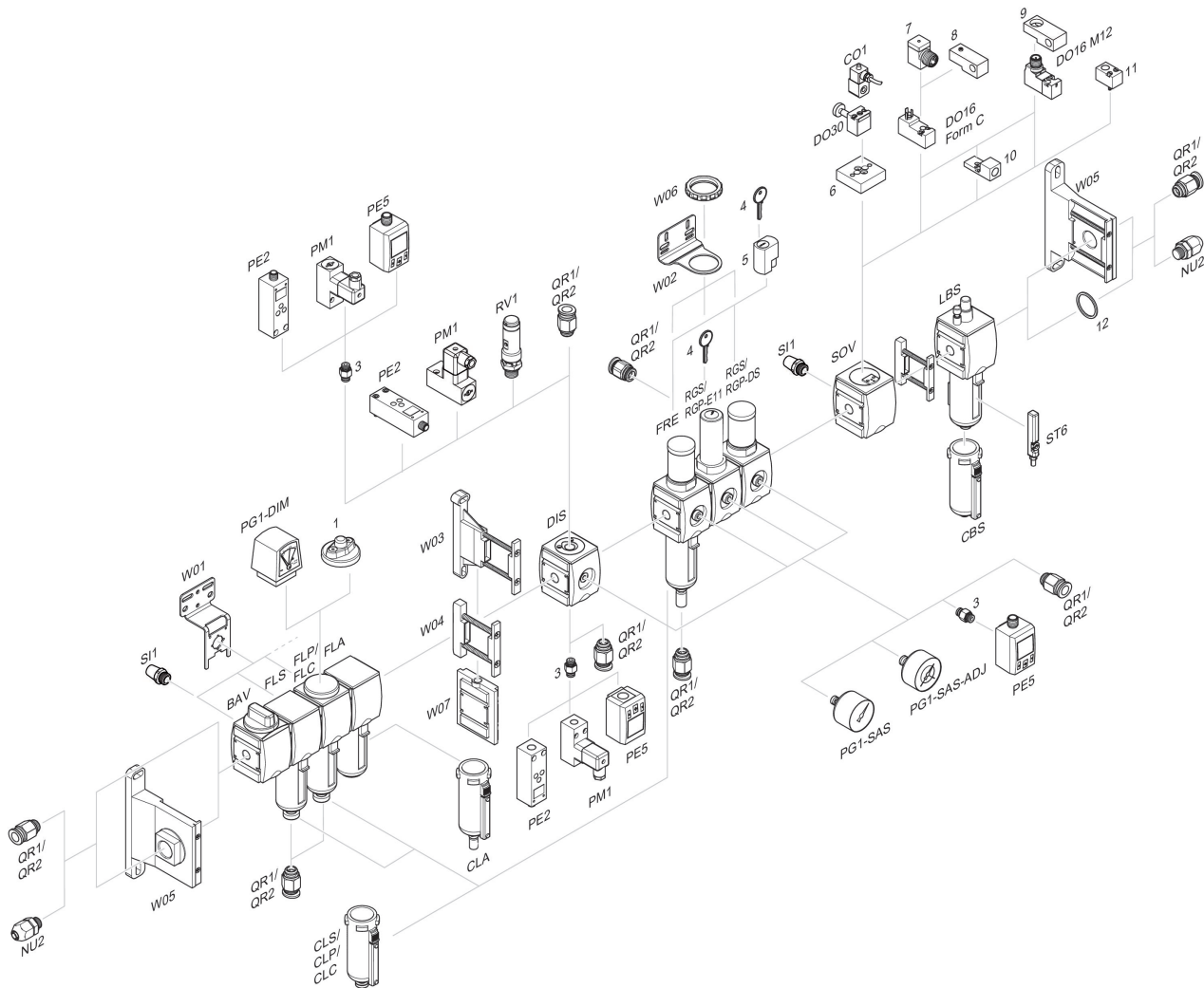
$p_2$  = Secondary pressure  
 $q_n$  = Nominal flow

## Rear exhaust



$p_2$  = Secondary pressure  
 $q_n$  = Nominal flow

## Accessories overview



1 = contamination display 3 = Double nipple 4 = Key for E11 locking 5 = mortise lock 6 = Transition plate DO30 7 = Adapter, Series CON-VP 8 = Mounting aid DO16, form C 9 = Mounting aid DO16, M12 10 = Adapter for external pilot air 11 = Adapter pneumatic operation 12 = Sealing ring